



GIG  
CYMRU  
NHS  
WALES

Rhaglen Genedlaethol Gofal  
Lliniarol a Diwedd Oes  
National Palliative and End  
of Life Care Programme

*This is our vision for palliative and end of life care delivered in Wales for all who need it by people working closely together, at home when appropriate, determined by what matters to the person and underpinned by what works.*

# BULLETIN

*Issue 3,  
February 2024*

Welcome to the third edition of the Palliative and End of Life Care (PEoLC) Programme bulletin.

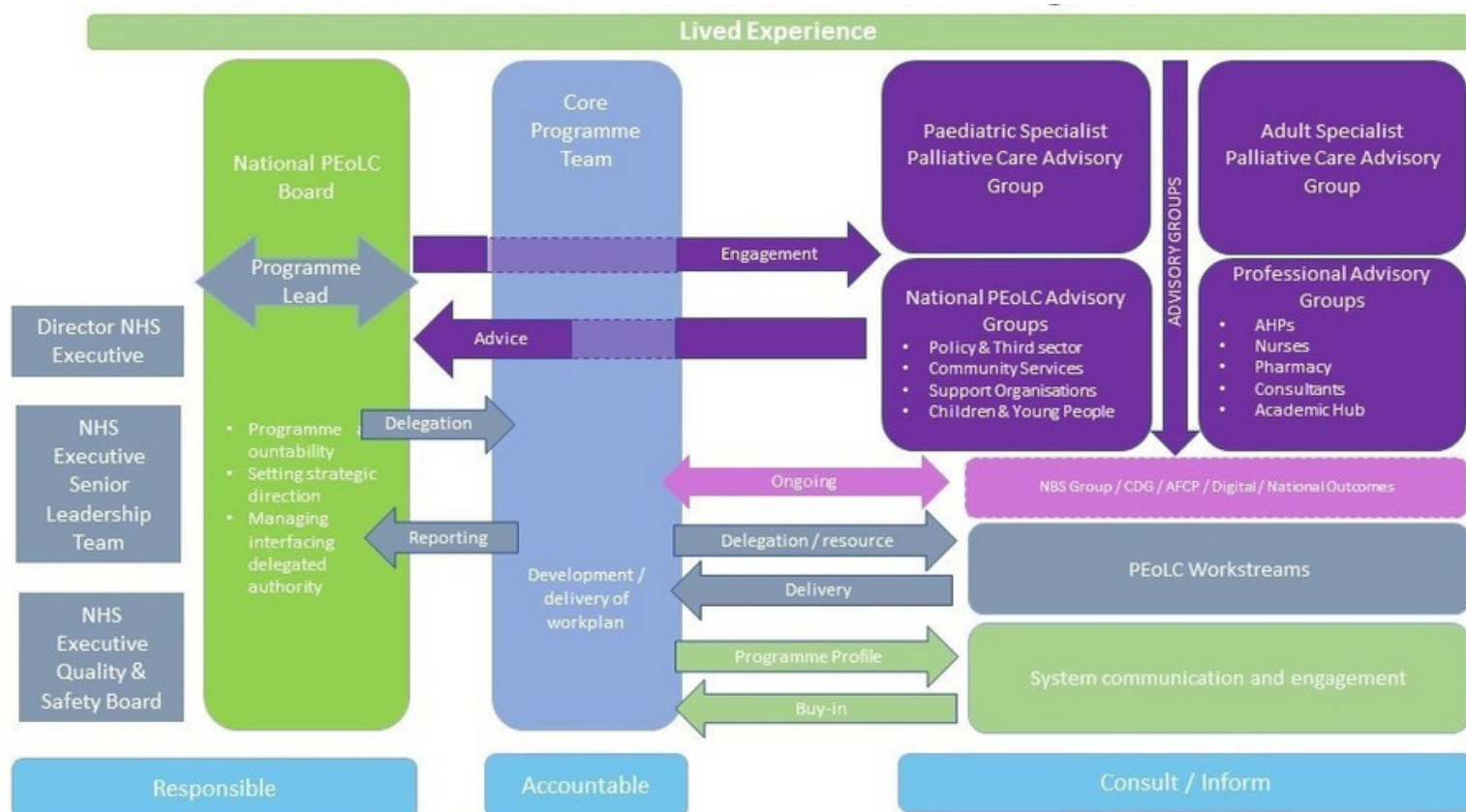
Our efforts this quarter were focused on the stakeholder engagement via face-to-face workshops and meetings as well as progressing Phase 3 recommendations for the Welsh Government.

You can access our **Quality Statement** by clicking on the icon below



PLEASE NOTE, THE BULLETIN WILL BE MADE AVAILABLE IN WELSH ON REQUEST

# NATIONAL PEOLC PROGRAMME STRUCTURE



Whether it's in the community or in hospitals, in the NHS or in voluntary sector services, wherever it is needed, whatever the age or diagnosis or circumstances of people needing it, Palliative & End of Life Care (PEoLC) matters. The National PEoLC Programme exists to help improve the experience for everyone in Wales. The Programme encompasses the groups shown in the Programme structure, and is working with other Networks and Programmes whose work overlaps with ours, and with local teams across Wales, to enact the requirements of the Quality Statement for PEoLC. The need for better palliative & end of life care affects us all, and it is going to take all of us working together to get it right. So do think about areas of common interest with your work and get in touch if you can think of ways to work together.

**Dr Idris Baker - National Clinical Lead**

# GOOD GRIEF CONNECTS: SUPPORTING MINORITISED ETHNIC COMMUNITIES ACROSS WALES



*The Good Grief Connects learning and networking event, held at Cardiff City Stadium on December 6th, successfully brought together stakeholders from diverse backgrounds across Wales. Organised by researchers from the University of Bristol in collaboration with Compassionate Cymru and Action in Caerau & Ely (ACE), the one-day free event was aimed to facilitate discussions on death, dying, bereavement, and future serious illness within minoritised ethnic communities.*



## GOOD GRIEF CONNECTS CONTINUED

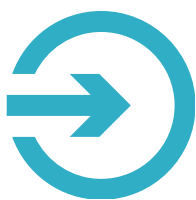


*John Moss presenting at the event*

Participants were invited to engage in breakout sessions and focus groups, facilitated by experts from the University of Bristol and ACE.

An in depth analysis of the discussions is taking place. This will allow for further refinement of findings and themes discussed during the focus groups.

Attendees had the opportunity to network and share experiences, resources, and learning on supporting ethnic communities in Wales. The event encouraged collaboration on geographic and thematic overlaps.



Results will be made publicly available on the [study website](#), [Compassionate Cymru's website](#), [ACE's website](#). They will also be published in journals and used in conference presentations.

Funded by The National Lottery and approved by the University of Bristol Health Sciences Faculty Research Ethics Committee (ref:15770), this initiative marks a significant step in enhancing support for ethnic communities in Wales.



## PEOLC LEAD NURSE WORKSHOPS



*Statutory lead nurses in a small group discussion during the workshop*

**The PeoLC Lead Nurse Workshops, led by National PeoLC Lead Alison Foster, were conducted in late November 2023.**

The statutory sector workshop took place at the PAVO venue in Llandrindod Wells, Powys, while the voluntary sector session was held on MS Teams, ensuring widespread participation. These workshops provided an excellent platform for collaboration and discussion.

Participants made use of the opportunity to exchange insights, share clinical experiences, and explore ideas, all with the common goal of defining a “good” Palliative and End-of-Life Care (PEoLC) service in Wales. The wealth of information gathered during these sessions has been consolidated into a report which will be presented to the National PEoLC Programme, influencing the development of the Service Specification for Wales.

## PEOLC LEAD NURSE MEETINGS



*Thank you for  
chairing!*

The PEoLC Programme Team would like to extend our sincere gratitude to Andrea Rich for her dedicated contributions as the chair during the past year of transition and growth in 2023.

As part of the rotational nature of the role, starting January 2024, Helen Way has assumed the position of National PEoLC Lead Nurse Group chair, with Carys Stevens as deputy.

## OPEN NETWORK MEETING FOR AHPS WORKING IN PEOLC



Allied Health Professionals (AHPs) working in Palliative and End of Life Care (PEoLC) across Wales joined an online professional networking event.

**The first session was held on on 18th January 2024 via MS Teams and was facilitated by Jackie Pottle, National PEoLC AHP Lead.**

It provided a supportive platform for AHPs share their knowledge and skills as well as learn more about the overarching National PEoLC Programme and the work being carried out for the Welsh Government.

Presenters shared about the role of a dietician in PEoLC, The Welsh Ambulance Service (WAST) and the *Fruit Fly Collective*, a charity to support children, adults and families affected by cancer.

The intention is to run this event several times a year. Please get in touch if you would like to receive an invite.



**Next Date: 12th July 2024**



## WHAT MATTERS MOST? EXHIBITION



An exhibition inspired by *Same but Different* photographer and director, Ceridwen Hughes' own experience of end-of-life care, when her mother died in 2020.

Through photography, film and written narratives you are introduced to the experiences of those living with dying and the caregivers involved in providing care and support.

You can access the exhibition online via the icon above or QR code below.

What matters **most?**

An honest, raw and inspiring account of 'what matters most?' aimed at improving end of life care provision through the experiences of those receiving and delivering care.

A collaborative creative project

 Same but Different  Marie Curie

 hospiceUK  CICRIA SYMMUREDOL COMMUNITY FUND

[www.samebutdifferentcic.org.uk/whatmattersmost](http://www.samebutdifferentcic.org.uk/whatmattersmost)



Discover more

This image is of Mo who has been diagnosed with terminal cancer



## WHAT MATTERS MOST?

The launch of the exhibition took place in the Oriel at the Senedd in Cardiff on Tuesday, 23 January 2024.

This collaborative effort between *Same but Different*, *Marie Curie*, and *Hospice UK* explored the personal experiences of those connected to end-of-life care.

The event and exhibition were sponsored by Mark Isherwood MS.



*Ceridwen Hughes delivering a speech*

Photographer: Patrick Olnier, Tall and Short Photography

## WHAT MATTERS MOST?

The PEoLC Programme Team attended the launch exhibition at the Sennedd.



Photographer: Patrick Olnier, Tall and Short Photography

## NEWS AND EVENTS



### National PEOLC Programme Event

**Date: Friday, 1st March 2024**

**Venue: All Nations Centre Cardiff, CF14 3NY**

This gathering aims to bring PEOLC stakeholders together to network, share valuable insights as well as facilitate the co-production for the All Wales service specification.

We are excited to welcome our guest speakers Dr Kathryn Mannix, Emily Holmes with the talk on Health Economics as well as lived experience guests.

Thank you all who have registered to attend. We are looking forward to seeing you at the event.



# NHS EXECUTIVE STAKEHOLDER BULLETIN



NHS Executive have published their first External Stakeholder Bulletin in November 2023. The issue offers an introduction to the Executive team, an overview of the directorates, profiles of the Senior Leadership Team members, and essential details about their work. Customised for the colleagues in the NHS and the third sector, these updates are going to become a regular and valuable resource.

**You can access the newsletter by clicking on the image below.**





## CONTACT US

Let us know if you would like to be on our mailing list



<https://executive.nhs.wales/PEoLC>



[nhswe.nationalpeolcprogramme@wales.nhs.uk](mailto:nhswe.nationalpeolcprogramme@wales.nhs.uk)



[@PallCareCymru](https://twitter.com/PallCareCymru)

