



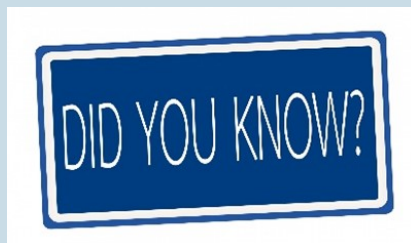
Welcome to the August edition of the National Endoscopy Programme's Clinical Pathways Newsletter

Spotlight on: **Piloting Colon Capsule Endoscopy across 4 health boards**

Earlier this year it was announced that our application for funding from the Bevan Commission Planned Care Innovation Programme to pilot Colon Capsule Endoscopy in Wales was successful. This was an exciting step forwards which has paved the way for implementing and exploring the use of this innovative diagnostic solution in the lower GI pathway.

There are 4 health boards participating in the pilot across Wales – Cwm Taf Morgannwg University Health Board, Betsi Cadwaladr University Health Board, Cardiff & Vale University Health Board and Swansea Bay University Health Board.

Click here to go to our page on the Bevan Commission website - [Piloting Colon Capsule Endoscopy \(CCE\) in Wales - Bevan Commission](#)



Benefits for patients and providers

CCE is a painless non-invasive procedure that uses a pill video camera to examine the large bowel (colon). Initial research suggests that procedure-related distress (discomfort and embarrassment) seems to be less during CCE than colonoscopy (BSG, 2022). No sedation is used, and very few major complications have been reported with CCE

(BSG, 2022).

Preliminary findings from NHS England indicate that a significant proportion of patients may be spared the need for colonoscopy, reducing the need for further investigation and avoiding any associated risks with those procedures. Potential avoidance and consequent reduction in colonoscopy as a result of utilising CCE instead also has cost savings associated with the pathway costs of a colonoscopy. Read more about Colon Capsule Endoscopy on the BSG website [here](#)

A national approach to both implementation and service delivery

This is a co-ordinated and collaborative project to implement CCE initially with a view to learn from the implementation and evaluation. If proven to be successful, it can be rolled out nationally across Wales. Staff from the 4 HBs have access to a network of health professionals for support and discussion throughout the process to help increase clinician confidence and enable a robust evaluation. At a time of significant workforce pressures that impact on service capacity, this project also includes a national approach to providing image reading capacity across the clinical community and across Health Board boundaries. This will increase the accessibility, equity and sustainability of the service to patients across Wales.



Progress so far

- Colon Capsule working group monthly meetings commenced from May
- Project Plan milestones set
- Business meetings with all 4 health boards carried out
- Clinical criteria and key patient information developed and standardised across 4 health boards - *get in touch with us via the contact details below for more information about this.*

We will keep you updated with progress in these newsletters as the pilots get up and running.

Other Clinical Pathways workstream business

Update on FIT in the Symptomatic Service - The Association of Coloproctology of Great Britain & Ireland (ACPGBI) and the British Society of Gastroenterology (BSG) recently released a joint guideline on *Faecal Immunochemical Testing (FIT) in patients with signs or symptoms of suspected colorectal cancer (CRC)*.

As a workstream, we will be shortly releasing a statement on this, which will consider the guideline alongside the *NEP National Framework for the Implementation of FIT in the Symptomatic Service* and set out how the two documents align. This will be sent out to members and published on our workstream website page – [click here](#) to keep an eye out for this.

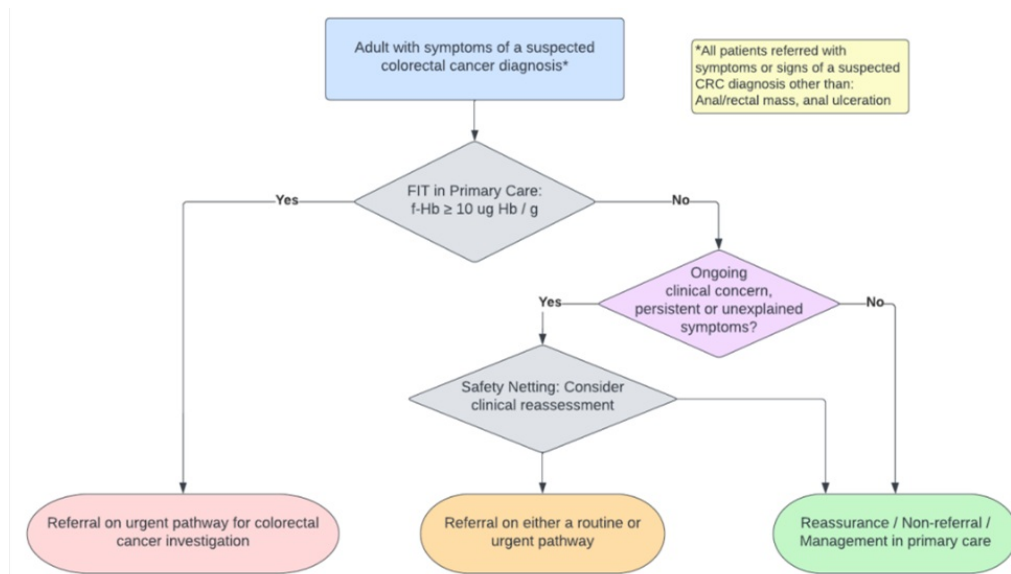


Figure 2 - BSG 2022

There are a number of groups that the Clinical Pathways workstream established during the programme such as the general Clinical Pathways subgroup and FIT subgroup, to update members of these groups on general progress, rather than calling meetings for these groups to reconvene we have decided it is best for us to update via this newsletter instead going forwards. However, we welcome any comments or queries about this - please get in touch using the contact details below.



Follow us on Twitter
@WalesNEP

Who are we?

Clinical Pathways Core Team

Clinical Lead: Dr Sunil Dolwani

Managerial Lead: Dana Knoyle

Senior Project Manager: Naomi Davies

A page with the most up-to-date NEP news and recovery guidance can be found on The NHS Wales Health Collaborative website.

Visit our website

NHS Wales Health Collaborative | 1st Floor, River House, Ynys Bridge Court, Gwaelod y Garth,
Cardiff, CF15 9SS United Kingdom

[Unsubscribe helen.james13@wales.nhs.uk](mailto:helen.james13@wales.nhs.uk)

[Update Profile](#) | [Constant Contact Data Notice](#)

Sent by nhswhc.commsteam@communications.wales.nhs.uk powered by



Try email marketing for free today!